



FMI Executive Committee Avian Influenza Update February 24, 2025

Status of Avian Influenza Outbreak



Current Outbreak started in 2022

Affected species:

Chickens (broilers and layers)

Turkeys

Wild birds (primarily migratory birds)

Cattle (Dairy)

Various mammals

Humans

Vaccines are in trial and one has been conditionally approved for H5N2

chickens

turkeys

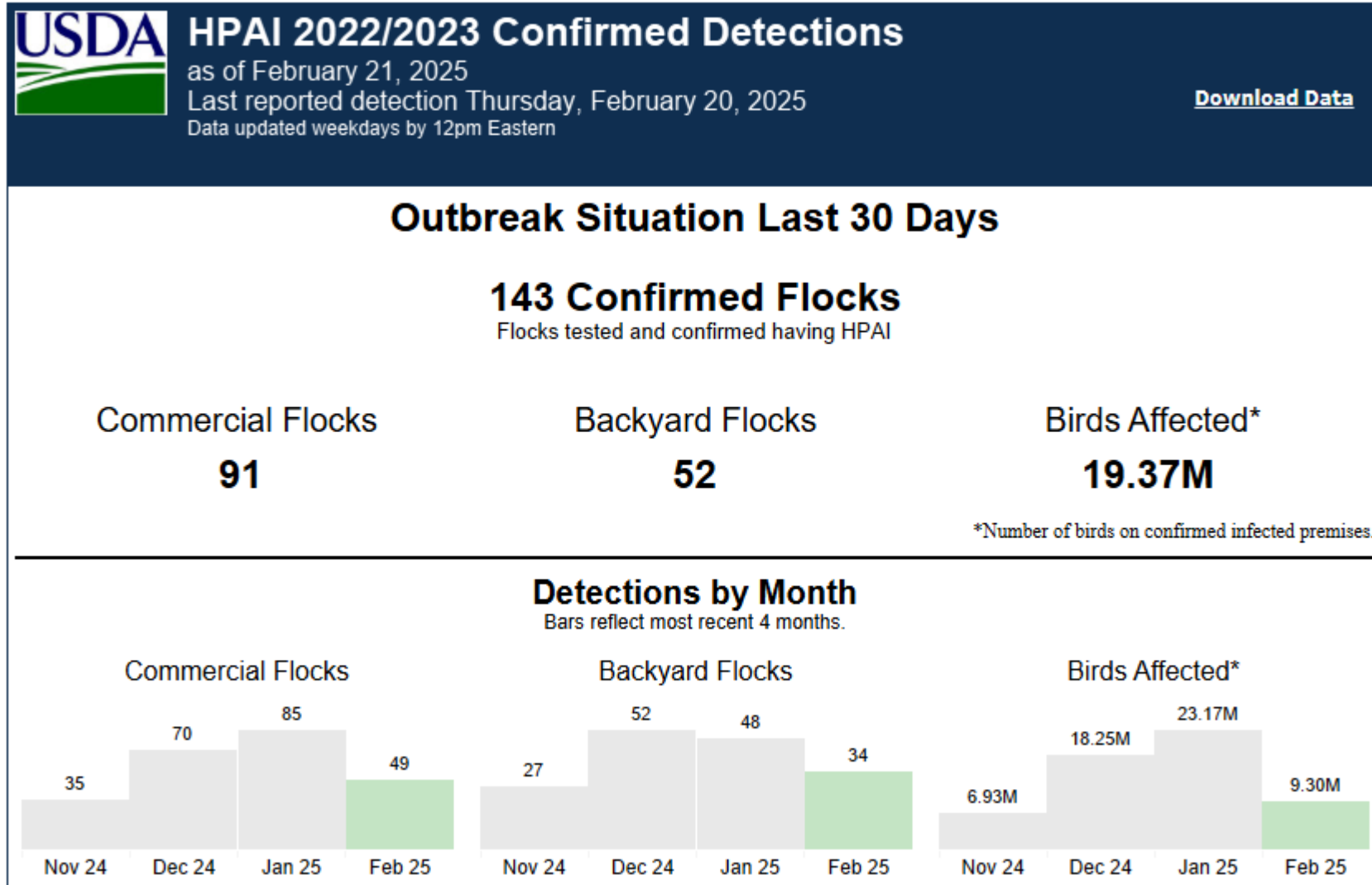
cattle

What is Avian Influenza?

- **Respiratory virus – Influenza A**
- Avian Influenza (AI) or Avian flu
- Highly Pathogenic Avian Influenza (HPAI)
- H5N1 – Subtype based on surface proteins
- Genetic Subtypes
examples are B3.13 (cattle)
and D1.1 in wild birds and poultry)

Size of virus is 80-120 nanometers (for reference, a millimeter is 1M times bigger than a nanometer)

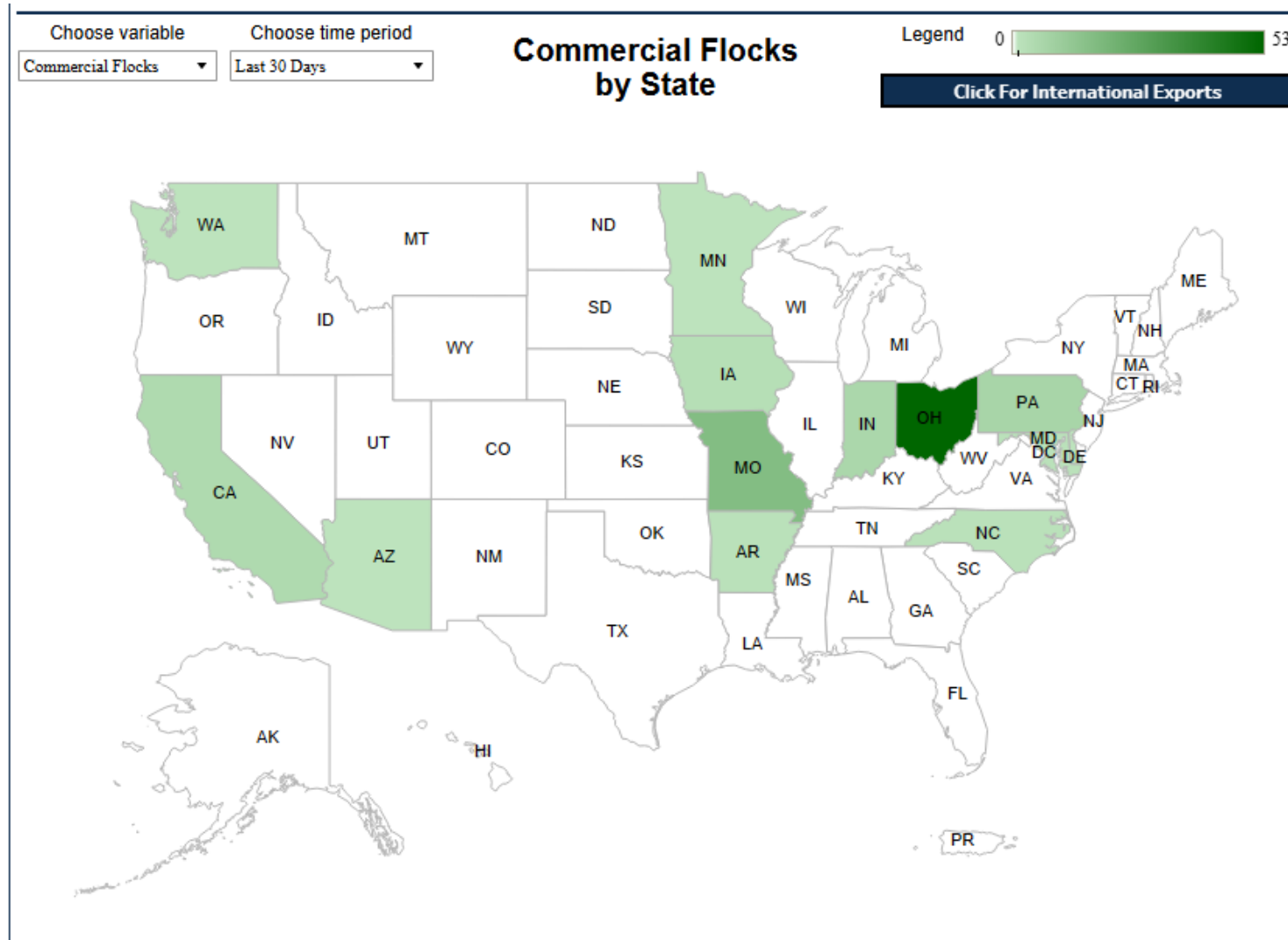
APHIS Updates - Commercial Poultry Flocks Infected with HPAI



Feb 21, 2025

<https://www.aphis.usda.gov/livestock-poultry-disease/avian/avian-influenza/hpai-detections/commercial-backyard-flocks>

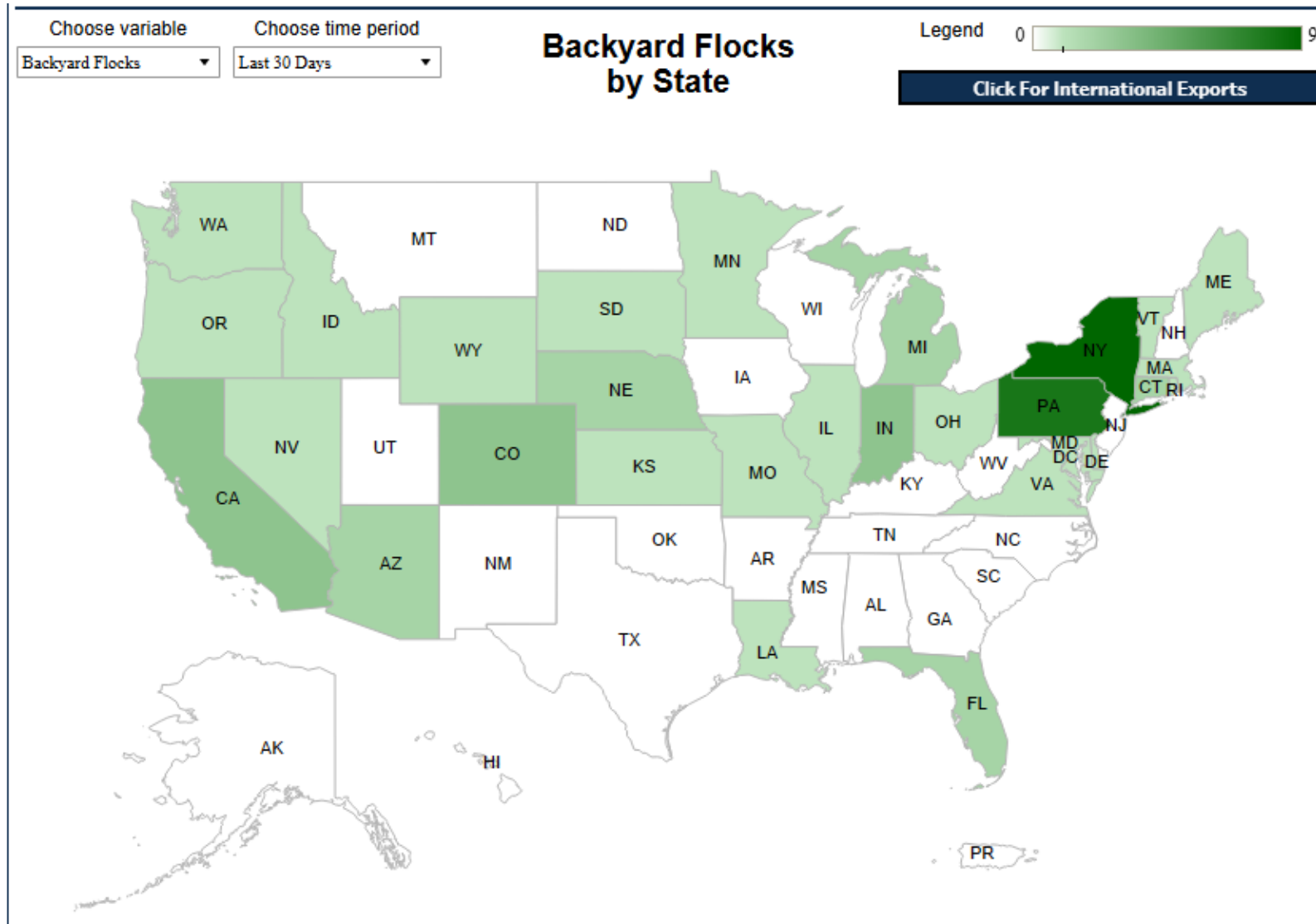
APHIS Updates - Commercial Poultry Flocks infected with HPAI



Feb 21, 2025

<https://www.aphis.usda.gov/livestock-poultry-disease/avian/avian-influenza/hpai-detections/commercial-backyard-flocks>

APHIS Updates - Backyard Poultry Flocks Infected with HPAI





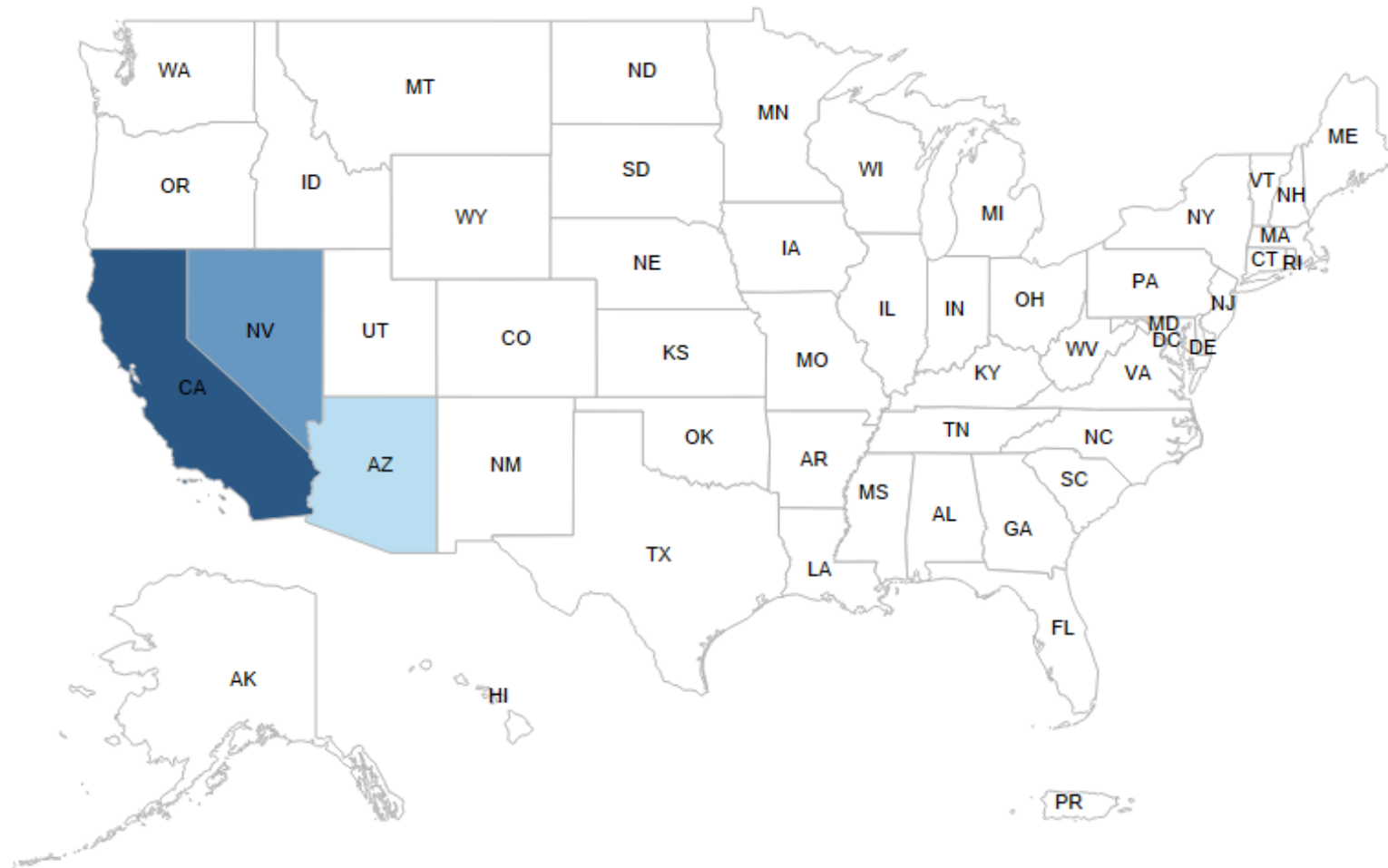
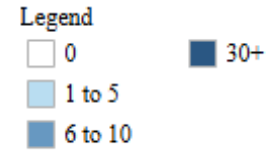
Migratory bird flyways in North America

US Fish and Wildlife Service

HPAI H5N1 - Cattle with H5N1



**Number of New Confirmed Cases in Cattle by State,
Last 30 Days**

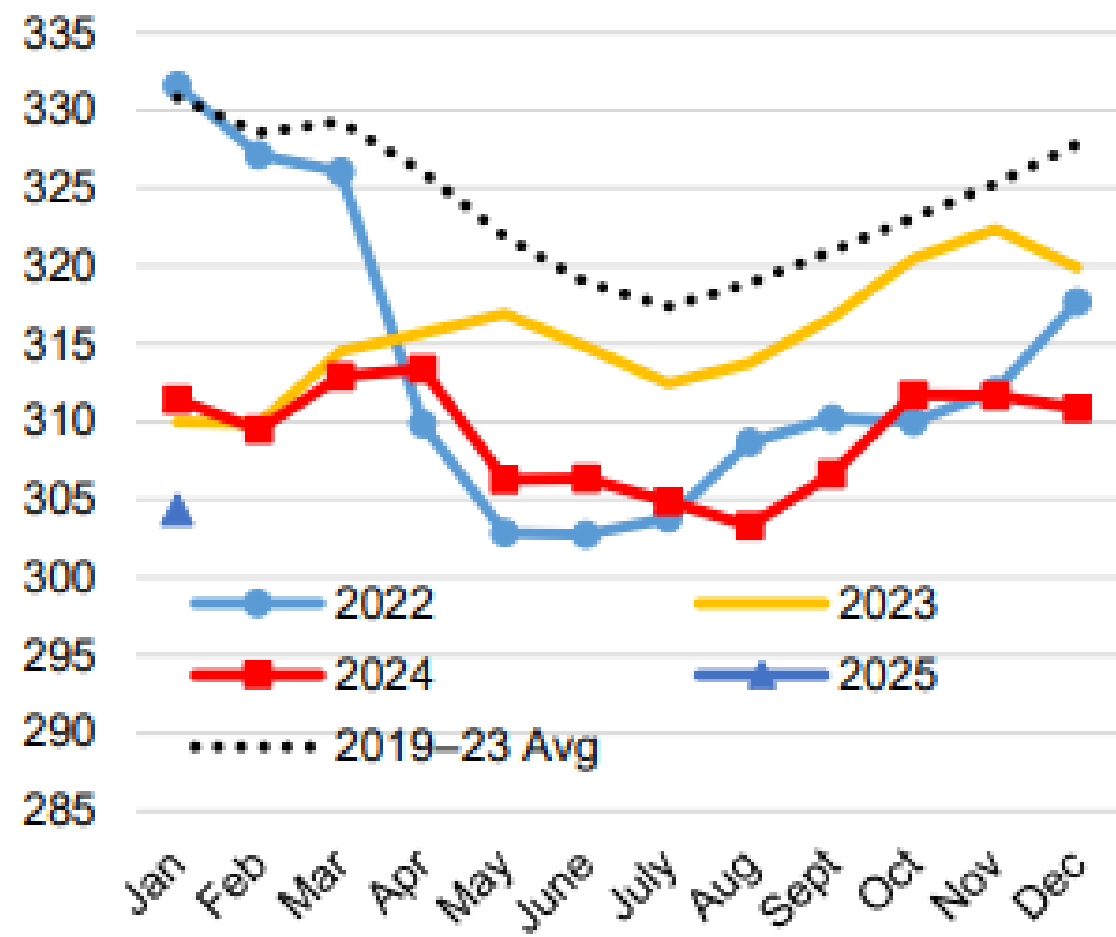


33 cases in past 30 days in 3 states

Egg Market Overview

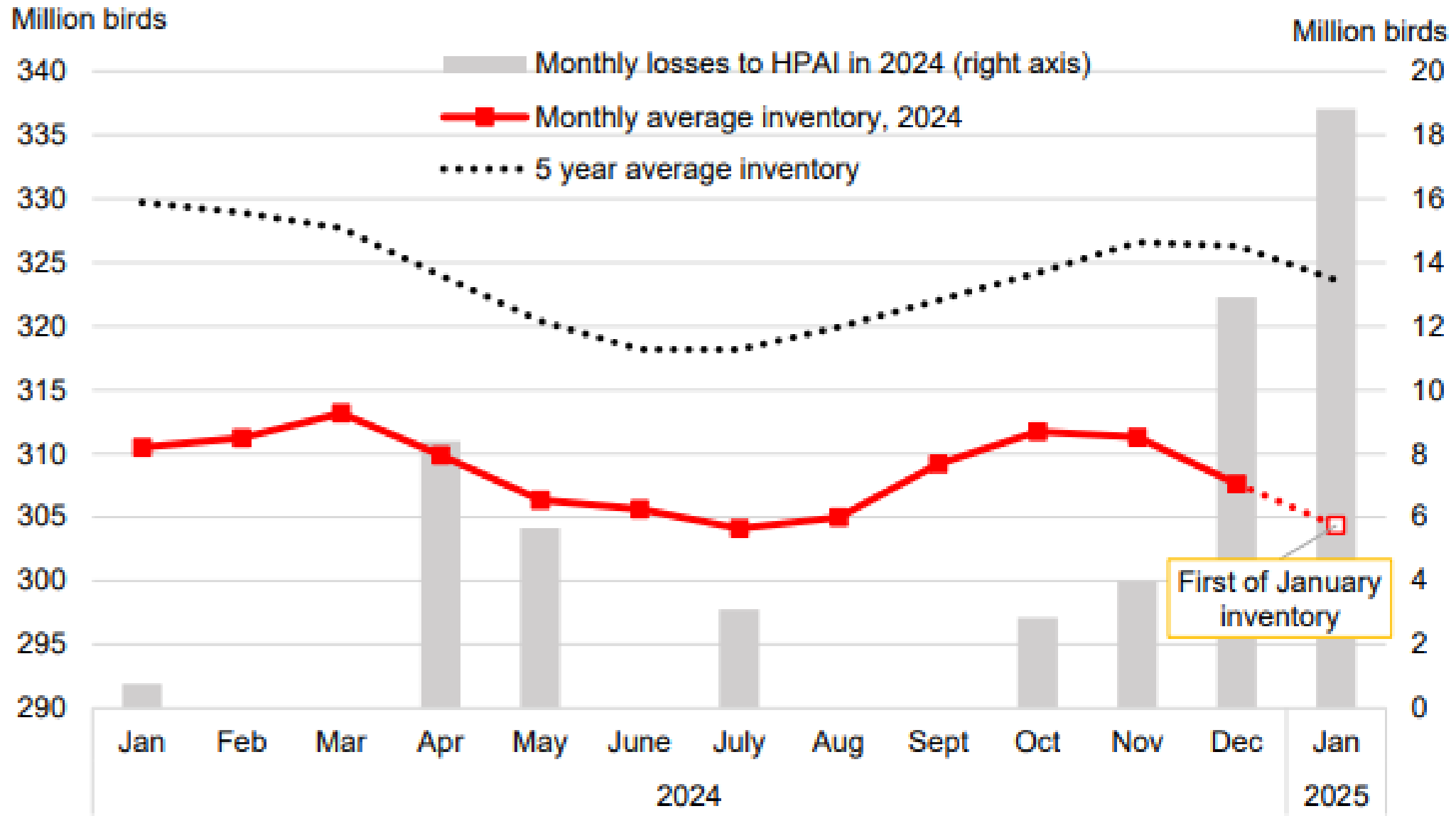
Table egg layer inventory on the first of the month, 2019–24

Million birds



U.S. Department of Agriculture, Economic Research Service. (2025). Livestock, dairy, and poultry outlook: February 2025 (Report No. LDP-M-368).

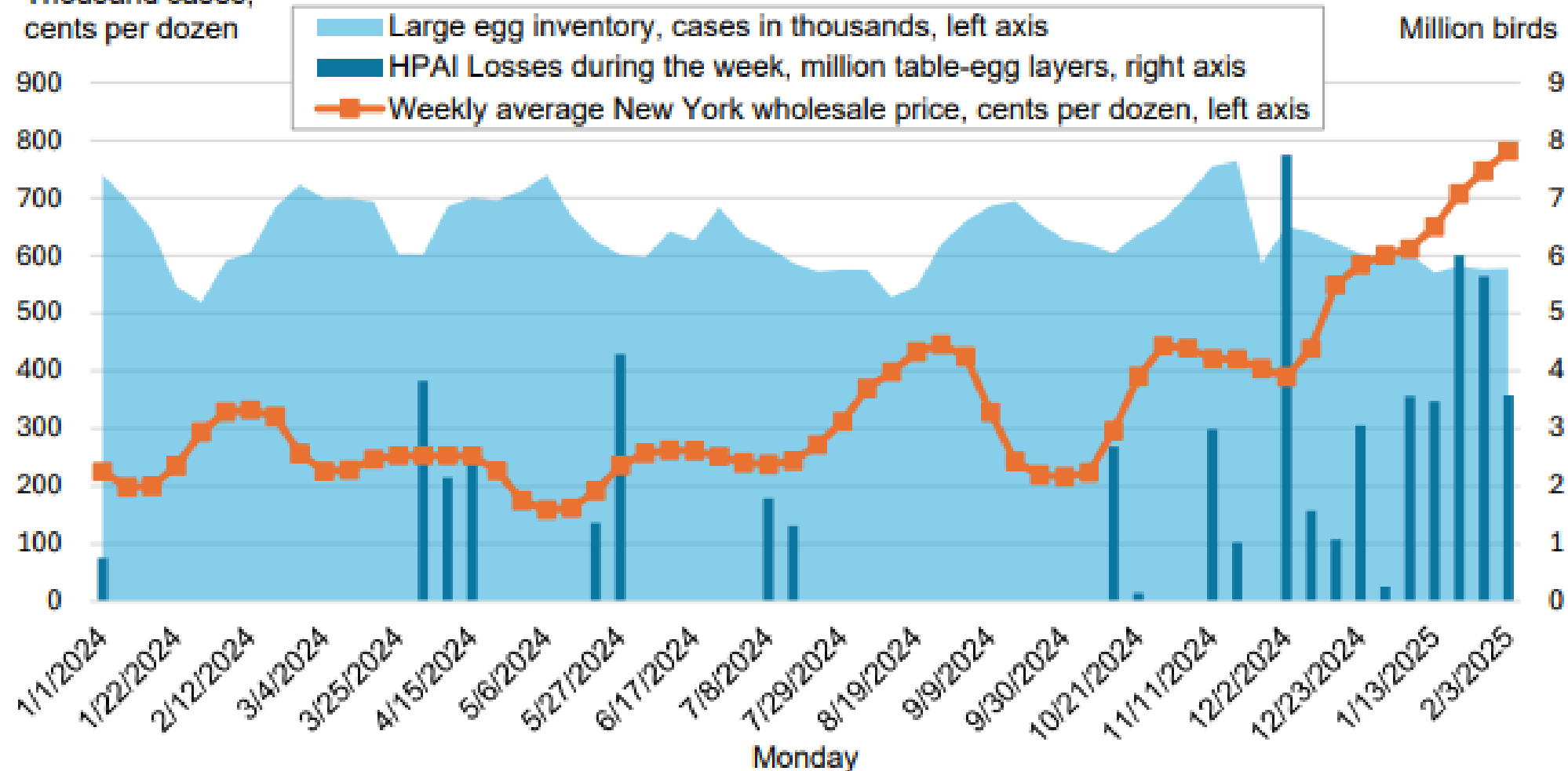
Average monthly table egg layer inventory and HPAI losses, January 2024–January 2025



Source: USDA, Economic research Service calculations using data from USDA, National Agricultural Statistics Service and USDA, Animal and Plant Health Inspection Service.

Weekly large egg inventories, losses of table-egg layers due to HPAI, and New York wholesale large egg prices, 2024–2025

Thousand cases,
cents per dozen



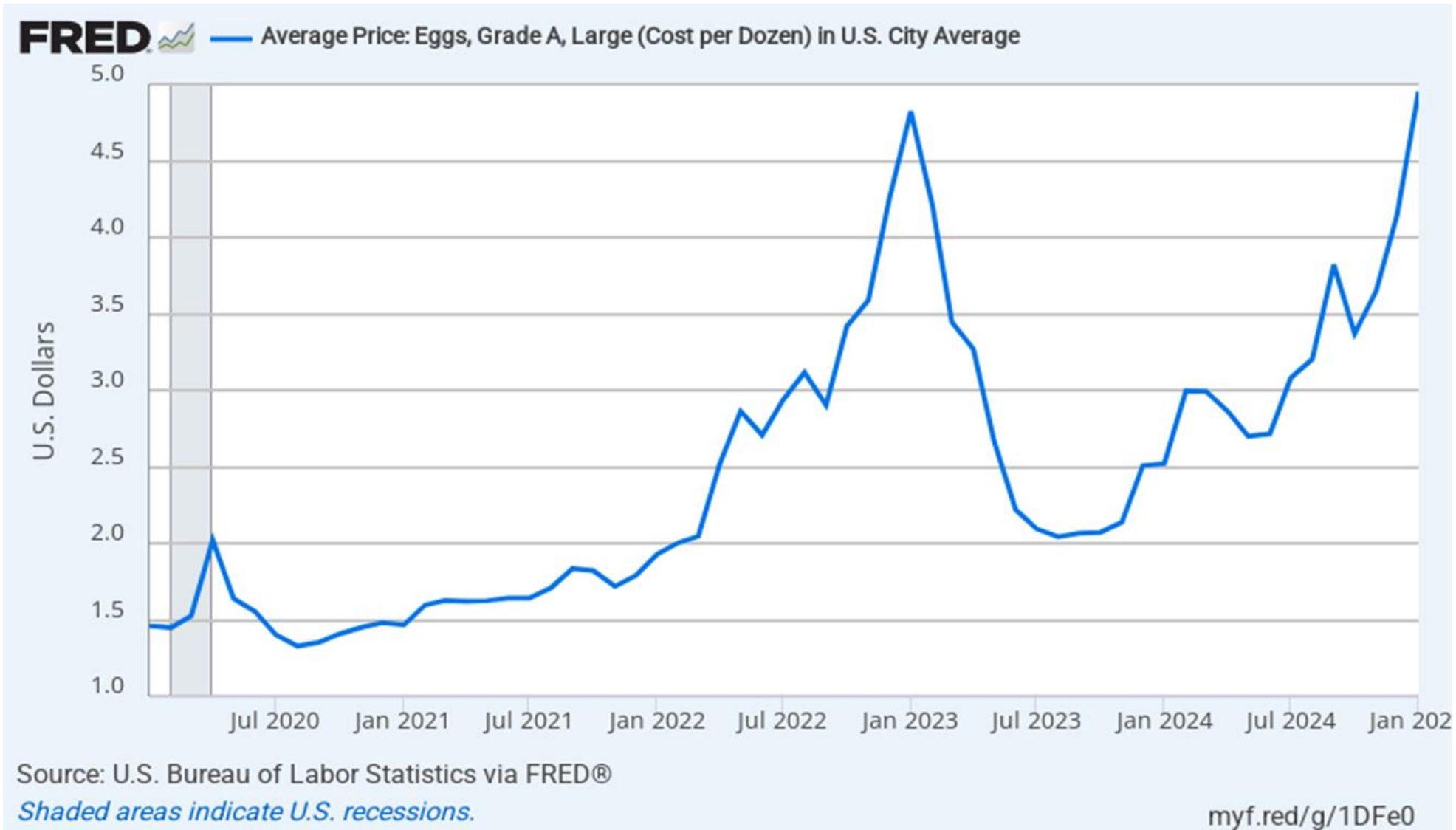
Note: One case = 30 dozen.

Source: USDA, Agricultural Marketing Service, and USDA, Animal and Plant Health Inspection Service.

2025 Table Egg Layer Losses by Production System

System	Loss	Share
Conventional Caged....	19,013,420	71%
Cage-Free.....	7,780,280	29%
Organic.....	26,100	0.1%
Total	26,819,800	

USDA AMS Livestock & Poultry Program, Livestock, Poultry, and Grain Market News Division, February 21, 2025, Egg Markets Overview



U.S. Bureau of Labor Statistics, Average Price: Eggs, Grade A, Large (Cost per Dozen) in U.S. City Average [APU0000708111], retrieved from FRED, Federal Reserve Bank of St. Louis; <https://fred.stlouisfed.org/series/APU0000708111>, February 23, 2025.

Resources



USDA Animal and Plant Health Inspection Agency (APHIS)

<https://www.aphis.usda.gov/livestock-poultry-disease/avian/avian-influenza/hpai-detections>

USDA Agriculture Marketing Service (AMS)

Egg Market News Reports

<https://www.ams.usda.gov/market-news/egg-market-news-reports>

CDC

<https://www.cdc.gov/bird-flu/situation-summary/data-map-commercial.html>