

Food Waste Reduction Alliance

GMA Staff Lead: Meghan Stasz, mstasz@gmaonline.org

FMI Staff Lead: Jeanne VonZastrow, jvonzastrow@FMI.org

NRA Staff Lead: Sue Hensley, shensley@restaurant.org

Food Waste

Any solid or liquid food substance, raw or cooked, which is discarded, or intended or required to be discarded

Food Wastes
are the organic residues
generated by the
processing, handling,
storage, sale, preparation,
cooking, and serving
of foods



Economic Impact

- Growing, processing, and transporting food of which 25 - 40% is ultimately wasted
- Manufacturer disposal expense, retailer shrink and disposal costs, consumer out-of-pocket costs, etc.



Environmental Impact

- Energy, water, and land use associated with food production of calories never consumed
- GHG generation when food scraps degrade in landfills



Social Impact

- 50 million Americans have food insecurity
- Enough nutritious calories are grown and produced each year to feed every American



Food Waste Initiative

Food Waste Reduction Alliance

- **3 year initiative**
- **Cross-Industry effort**
- **2 Goals**



1
Reduce
Food Waste
to Landfill



2
Increase
Food to
Donation

Food Waste Reduction Alliance



Food Waste Reduction Alliance



Food Waste Initiative

Food Waste Leadership Committee

Co-Chair: Susan Kujava, General Mills

Co-Chair: Michael Hewett, Publix

GMA Staff Lead: Meghan Stasz

FMI Staff Lead: Jeanne VonZastrow

NRA Staff Lead: Sue Hensley



Assessment

Chair: Michael Hewett *Publix*

Tier 1, 2011

Tier 2, 2012

Communication

Chair: Susan Kujava *General Mills*

Stakeholders

Recruitment

Goal-Setting

Emerging Solutions

Chair: Wayne MacLeod *Ahold USA*

Co-Chair: Gail Tavill *ConAgra Foods*

White Paper

Database

Best Practices Guides

Policy

Chair: Karen Hanner *Feeding America*

Co-Chair: Meghan Stasz *GMA*

“State of Play” document

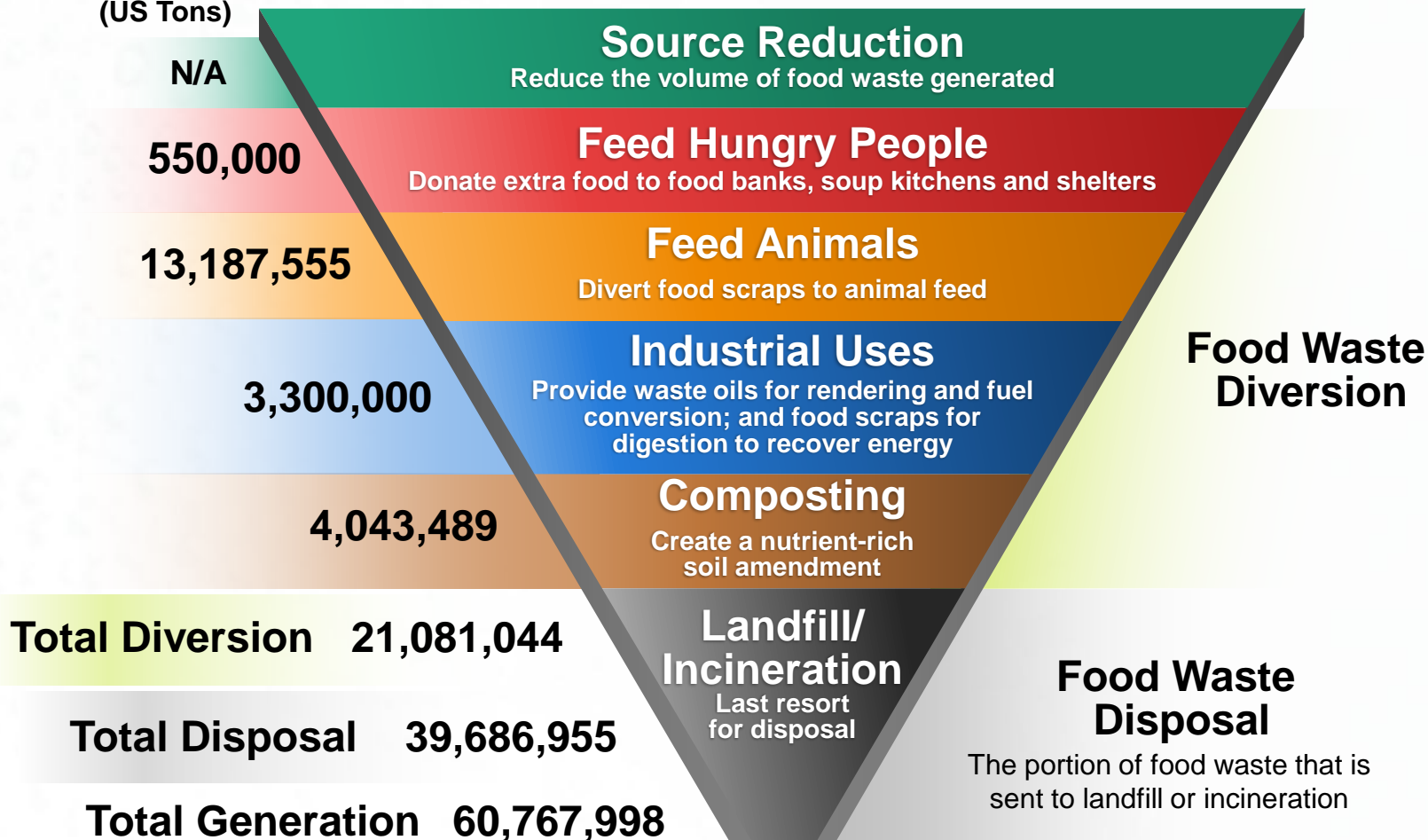
Policy Priorities

Advocacy

Assessment: Defining Food Waste Generation Vs. Disposal

Food Waste Recovery Hierarchy

Food Weight
(US Tons)



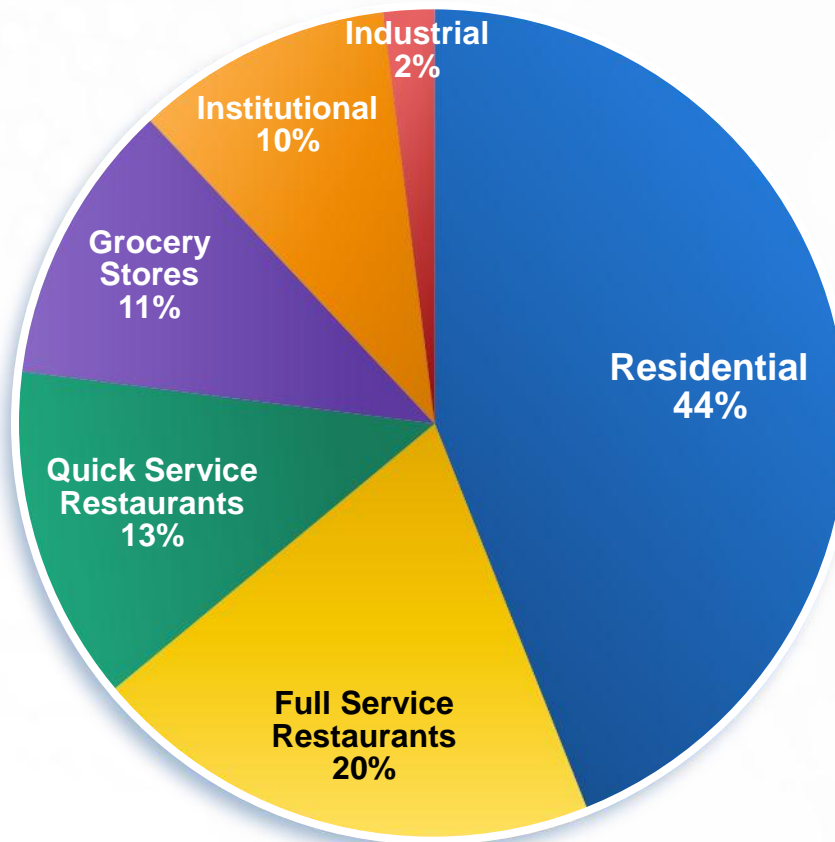
Occurs when an edible item goes unconsumed as a result of human action or inaction and is often the result of a decision made by business, government, or consumers.

This data is an estimate of estimates. Numerous data gaps exist and a number of assumptions and extrapolations have been made in order to derive these numbers. The calculation is based on a combination of secondary data from multiple sources.

Note: the scope is only from processor to consumer

Initial assessment: estimate of US food waste **DISPOSED** by sectors

% of contribution to US Food Waste disposed
among residential and commercial sectors



This data is illustrative but limited as a numerous data gaps exist and a number of assumptions and extrapolations have been made in order to derive this estimation.

The calculation is based on a combination of secondary data from multiple sources

Note: the scope is only from processor to consumer

Next Steps

- Phase II Assessment – Industry Survey
- Pilot Projects
- Best Practices
- Policy Recommendations